

1 EXPLAIN WHY THE FIRST TWO PICTURES ARE FRAMED WHEN THE LAST IS NOT



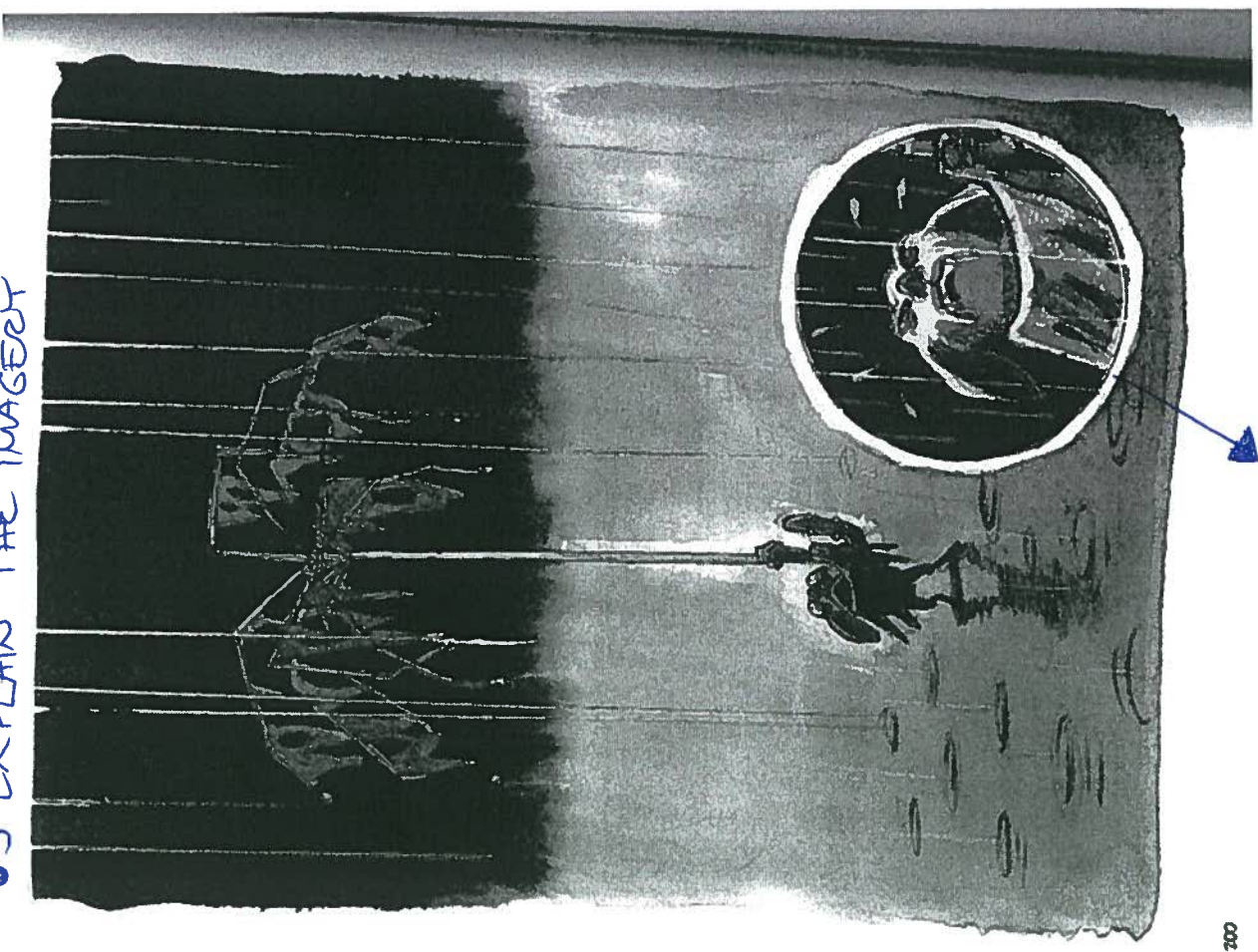
HER SILENT FURY WAS LIKE A BLACK TIDAL WAVE. EITHER YOU GET OUT OF THE WAY, OR...



46 TIDAL WAVE = TIDEVANNOSBALLE

2 CHARACTERISE THE MOTHER

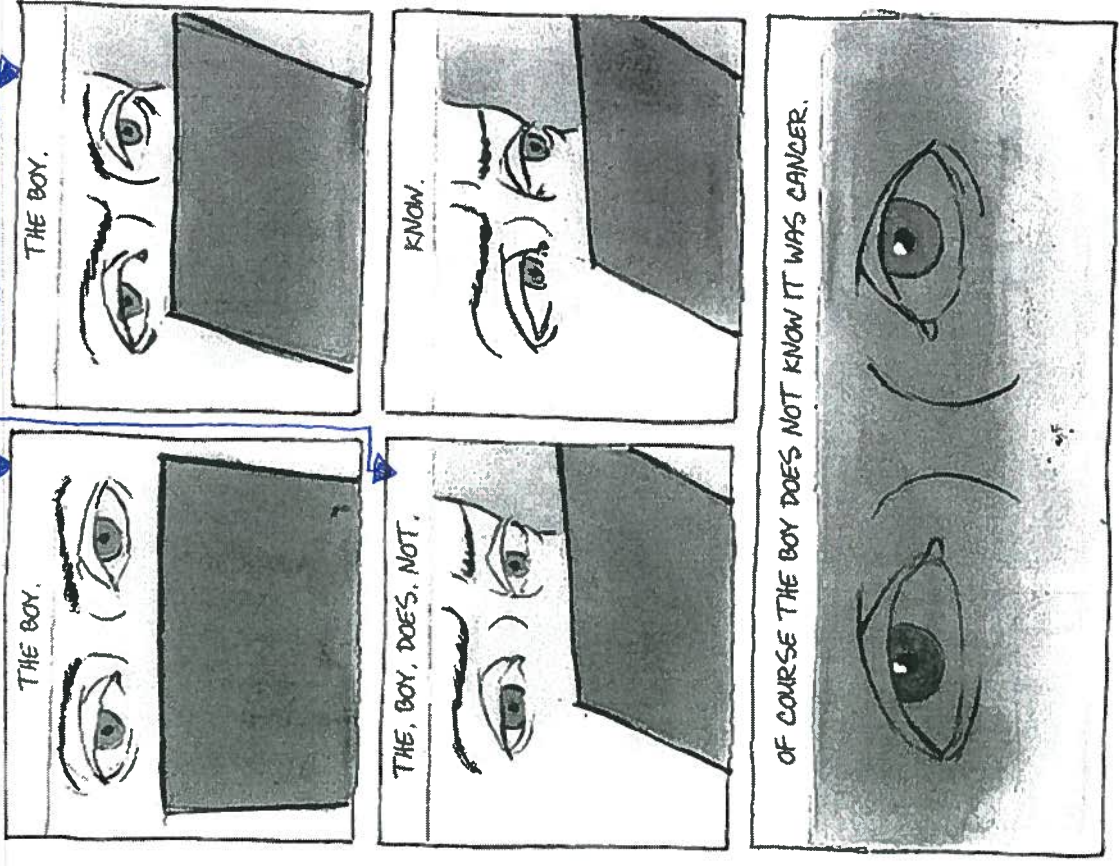
3 EXPLAIN THE IMAGERY



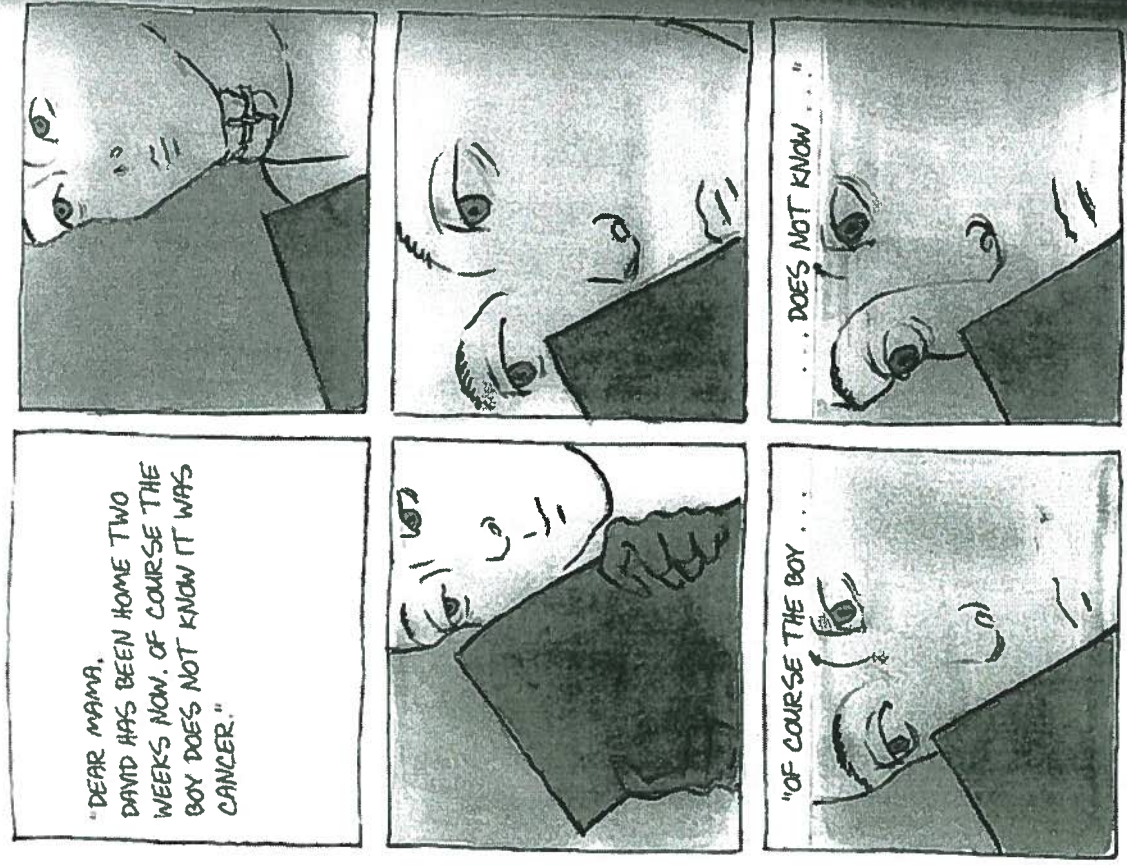
700

4 WHY IS THIS CLOSE-UP HERE?

06 WHAT HAPPENS HERE? WHY IS "THE BOY" REPEATED?



07 WHY IS THE LETTER PRESENTED LIKE THIS?



05 EXPLAIN WHY THE PICTURES ZOOM IN ON DAVID'S EYES